



# Waterfront

**15m wide lot**

Suits dry or waterfront lots

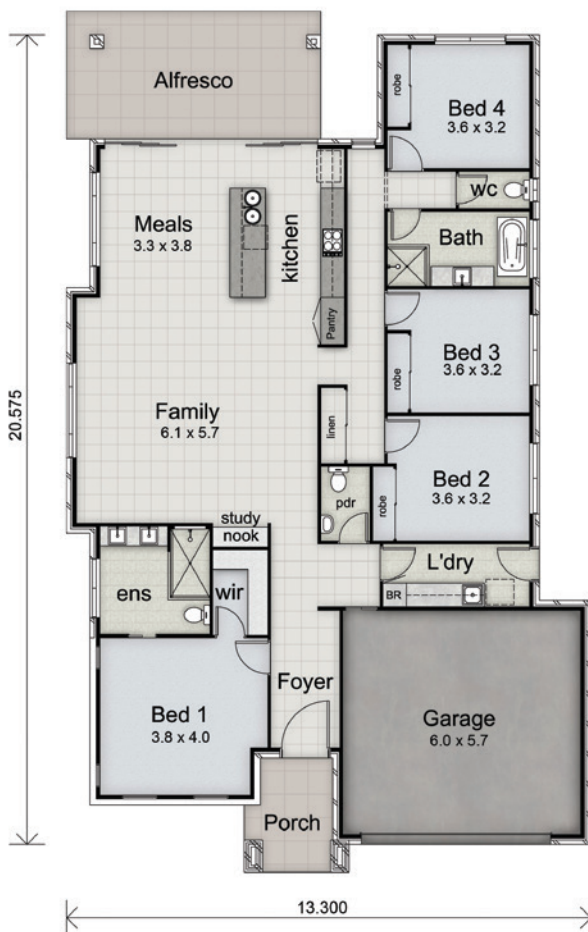
## Features

- 4 Bedrooms
- 2½ Bathrooms
- Large open plan living
- Galley style kitchen



This design suits a growing family with lifestyle in mind

As with any Platinum Residential design, this plan can be altered to suit your individual needs with your choice of facades.



### FLOOR AREAS

LIVING	181m <sup>2</sup>
GARAGE	38m <sup>2</sup>
ALFRESCO	15m <sup>2</sup>
PORCH	6m <sup>2</sup>
<b>TOTAL</b>	<b>240m<sup>2</sup></b>

4  2½  2 



### Three levels of satisfaction

1. Guaranteed start date
2. Guaranteed finish date
3. 18 weeks build time

contact email web Anthony Stopka - 0421 476 333  
[info@platinumresidential.net.au](mailto:info@platinumresidential.net.au)  
[www.platinumresidential.net.au](http://www.platinumresidential.net.au)

BSA No 1123972

**platinum**  
 RESIDENTIAL designer homes