



# Boardwalk

12.5m wide lot

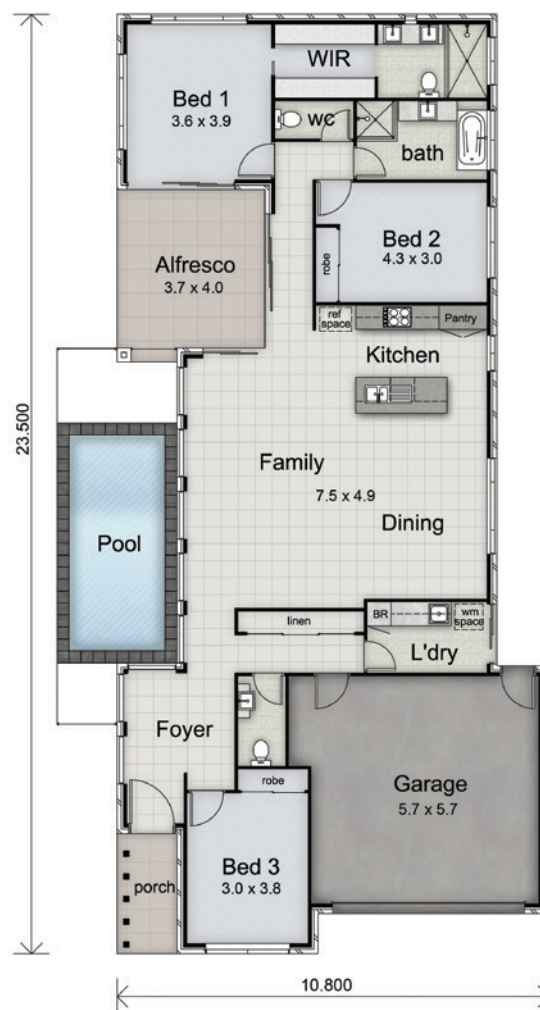
## Features

- 3 Bedrooms
- 2½ Bathrooms
- Large open plan living
- Large linen cupboard & storage to garage



This design maximises light & breezes on narrow lots

As with any Platinum Residential design, this plan can be altered to suit your individual needs with your choice of facades.



FLOOR AREAS	
LIVING	159m <sup>2</sup>
GARAGE	37m <sup>2</sup>
ALFRESCO	15m <sup>2</sup>
PORCH	3m <sup>2</sup>
<b>TOTAL</b>	<b>214m<sup>2</sup></b>



### Three levels of satisfaction

1. Guaranteed start date
2. Guaranteed finish date
3. 18 weeks build time

contact email web Anthony Stopka - 0421 476 333 info@platinumresidential.net.au www.platinumresidential.net.au

BSA No 1123972

platinum  
RESIDENTIAL designer homes