

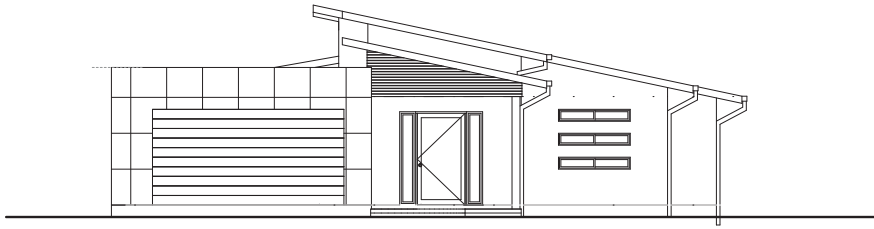
# Beachmont 30



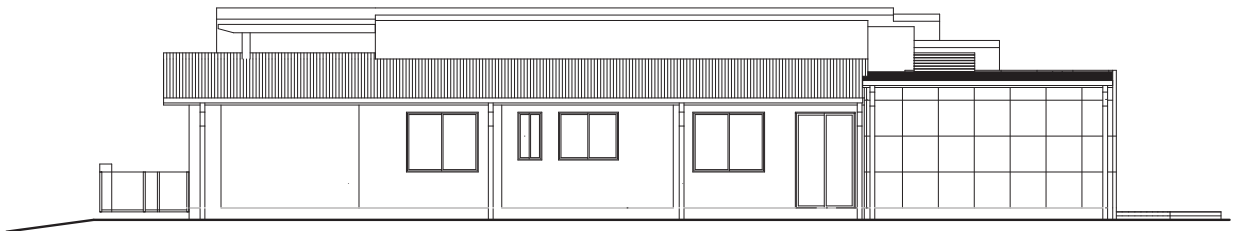
2008 MASTER BUILDERS QUEENSLAND



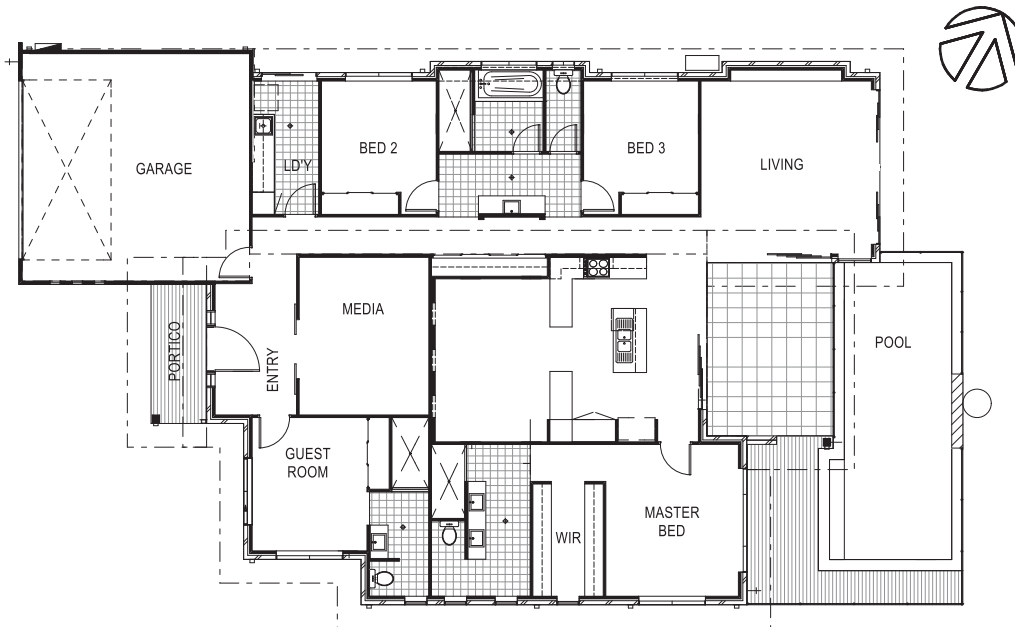
platinum  
RESIDENTIAL designer homes



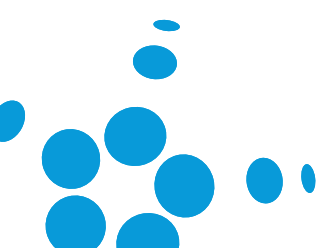
ELEVATION 1 -



ELEVATION 2 -



FLOOR PLAN



# Beachmont 30



2008 MASTER BUILDERS QUEENSLAND



Far away from the disquiet of the bustling world, lies an opulence of serene beauty – The **Beachmont 30**. This 4 bedroom, 3 bathroom residency is the perfect place for stress-free living. Spread over an area of 279 square metres, the property enjoys two living areas for your recreational activities and a beautiful outdoor living space with in-ground concrete pool to make the most of your lifestyle.

The **Beachmont 30** offers an idyllic place to relax your senses. It's clever design and use of space ensures it's suitability for smaller blocks and water frontages, without the compromise.

The **Beachmont 30** delivers entertaining and lifestyle with privacy. This home has a separate media room for movie lovers, an in-ground swimming pool, spacious ensuited bedrooms and a truly stylish functional kitchen.

The **Beachmont 30** combines the best of the outdoors with vogue interiors to personify good living.



### 3 levels of satisfaction

1. Guaranteed start date
2. Guaranteed finish date
3. 18 weeks build time

platinum  
RESIDENTIAL designer homes



**Platinum Residential Designer Homes** BSA No: 1123972

**Sunshine Coast**

tel (07) 5439 7397

email [info@platinumproperties.com.au](mailto:info@platinumproperties.com.au)

Display Home 46 Whitehaven Way  
Caloundra QLD 4551

**Hervey Bay**

tel (07) 4128 1333

email [info@platinumproperties.com.au](mailto:info@platinumproperties.com.au)

Display Home 199 Long Street  
Pialba, QLD 4655